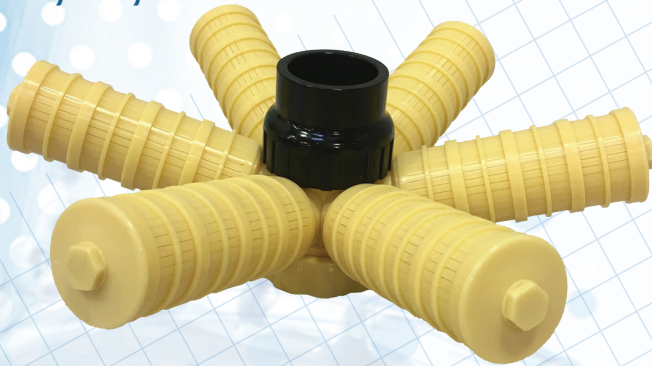


Commercial Tank Distributors

Canature WaterGroup™ has dedicated professional engineers with decades of commercial water treatment experience. Over the years, they have built a reputation for designing efficient, high quality commercial water softener systems.

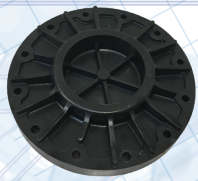
Hub and Lateral For Top Mount Valves – 1.5", 2", 3"



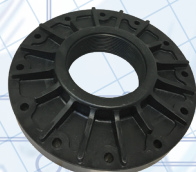
19613 UPPER SCREEN FOR TOP MOUNTED VALVE UNITS WITH A 1.5" RISER PIPE (REQUIRES SCREWS TO MOUNT (NOT INCLUDED))



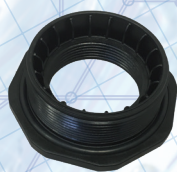
ITEM	DESCRIPTION	TANK OPENING	LATERAL CONNECTION	LATERAL SLOT SIZE (mm)	LATERAL MATERIAL	RISER CONNECTION MATERIAL	RISER PIPE SIZE
50040160	HIGH FLOW HUB & LATERALS 13"-16", 1.5"	4"-8 NPSM	THREAD	0.2	Polypropylene	ABS	1.5"
50040161	HIGH FLOW HUB & LATERALS 18"-21", 1.5"	4"-8 NPSM	THREAD	0.2	Polypropylene	ABS	1.5"
50040117	HIGH FLOW HUB & LATERALS 24", 1.5"	4"-8 NPSM	THREAD	0.2	Polypropylene	ABS	1.5"
50040118	HIGH FLOW HUB & LATERALS 30", 1.5"	4"-8 NPSM	THREAD	0.2	Polypropylene	ABS	1.5"
50040119	HIGH FLOW HUB & LATERALS 36", 1.5"	4"-8 NPSM	THREAD	0.2	Polypropylene	ABS	1.5"
50040124	HIGH FLOW HUB & LATERALS 24", 2"	4"-8 NPSM	THREAD	0.2	Polypropylene	ABS	2"
50040125	HIGH FLOW HUB & LATERALS 30", 2"	4"-8 NPSM	THREAD	0.2	Polypropylene	ABS	2"
50040126	HIGH FLOW HUB & LATERALS 42", 2"	4"-8 NPSM	THREAD	0.2	Polypropylene	ABS	2"
50040129	HIGH FLOW HUB & LATERALS 36", 3"	6" Flange	THREAD	0.2	Polypropylene	ABS	3"
50040130	HIGH FLOW HUB & LATERALS 42", 3"	6" Flange	THREAD	0.2	Polypropylene	ABS	3"
50040131	HIGH FLOW HUB & LATERALS 48", 3"	6" Flange	THREAD	0.2	Polypropylene	ABS	3"
50040133	HIGH FLOW HUB & LATERALS 30", 3"	6" Flange	THREAD	0.2	Polypropylene	ABS	3"
50040136	HIGH FLOW HUB & LATERALS 63", 3"	6" Flange	THREAD	0.2	Polypropylene	ABS	3"



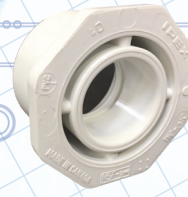
50040148 6" FLANGE CLOSURE*



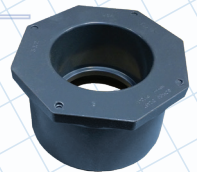
50040149 6" FLANGE CLOSURE WITH 4" THREAD*



50040039 ADAPTOR, TANK, 4"x2-1/2"



80030654 BUSHING TO ADAPT 1.5" TO 1" TUBE (3/4" PIPE), SPIG X SOC, PVC SCH 40, 1"



80030953 BUSHING TO ADAPT 3" TO 2" PIPE SPIG X SOC PVC SCH 80

OPERATING SPECIFICATIONS:

Operating Pressures 20-125 psi / 138-862 kPa
Temperature Ranges 40-110°F / 4-43°C.

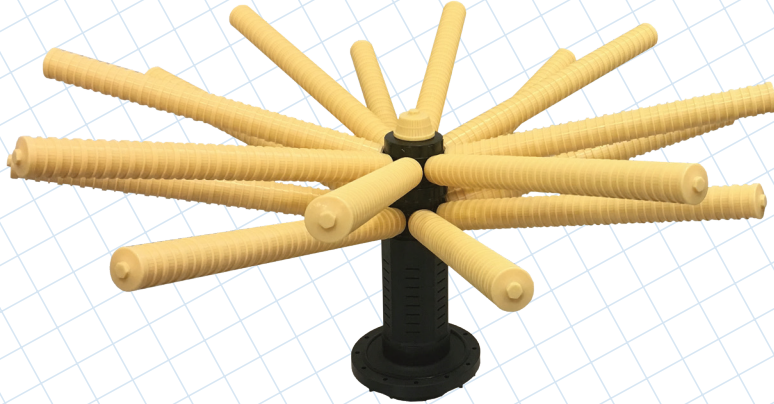
*C/W with stainless steel metric bolt kit.

Hub and Lateral For Bottom Mount – 3”



ITEM	DESCRIPTION	TANK OPENING	LATERAL CONNECTION	LATERAL SLOT SIZE (mm)	LATERAL MATERIAL	Pipe Connection
50040307*	HIGH FLOW HUB & LATERALS , 6” flange, 30”, 3” bottom mount	6” Flange	THREAD	0.2	Polypropylene	3” FNPT
50040309*	HIGH FLOW HUB & LATERALS , 6” flange, 36”, 3” bottom mount	6” Flange	THREAD	0.2	Polypropylene	3” FNPT
50040311*	HIGH FLOW HUB & LATERALS , 6” flange, 42”, 3” bottom mount	6” Flange	THREAD	0.2	Polypropylene	3” FNPT
50040314*	HIGH FLOW HUB & LATERALS , 6” flange, 48”, 3” bottom mount	6” Flange	THREAD	0.2	Polypropylene	3” FNPT
50040318*	HIGH FLOW DUAL HUB & LATERALS 63”, 3” bottom mount	6” Flange	THREAD	0.2	Polypropylene	3” FNPT

Hub and Lateral For Bottom Mount – 4”



ITEM	DESCRIPTION	TANK OPENING	LATERAL CONNECTION	LATERAL SLOT SIZE (mm)	LATERAL MATERIAL	Pipe Connection
50040322*	HIGH FLOW HUB & LATERALS , 6” flange, 63”, 4” bottom mount	6” Flange	THREAD	0.2	Polypropylene	4” FNPT
50040321*	HIGH FLOW HUB & LATERALS , 6” flange, 48”, 4” bottom mount	6” Flange	THREAD	0.2	Polypropylene	4” FNPT



50040301* TOP INLET DISPERSER 6”
FLANGE 3”SINGLE HUB



50040302* TOP INLET DISPERSER 6”
FLANGE 4 “ FNPT SINGLE HUB

*C/W with stainless steel metric bolt kit.
97000738 Stainless steel bolt kit c/w 12
bolts,nuts & washers.

Note:On all stainless steel threaded
connections, an anti seize compound
must be used (not supplied).

TOLL-FREE: 877-288-9888
www.canaturewg-cied.com

Regina, SK • Cambridge, ON • Carmel, IN • Pottstown, PA
Phoenix, AZ • Guadalajara, MX

